

*Who We Serve*

Moran Prairie

Latah Valley

Glenrose

Mica

Valleyford

Ponderosa

South Valley

Morningside

Saltese



# 2025 EMS Levy

## Proposition 1

Who We Serve

Moran Prairie

Latah Valley

Glenrose

Mica

Valleyford

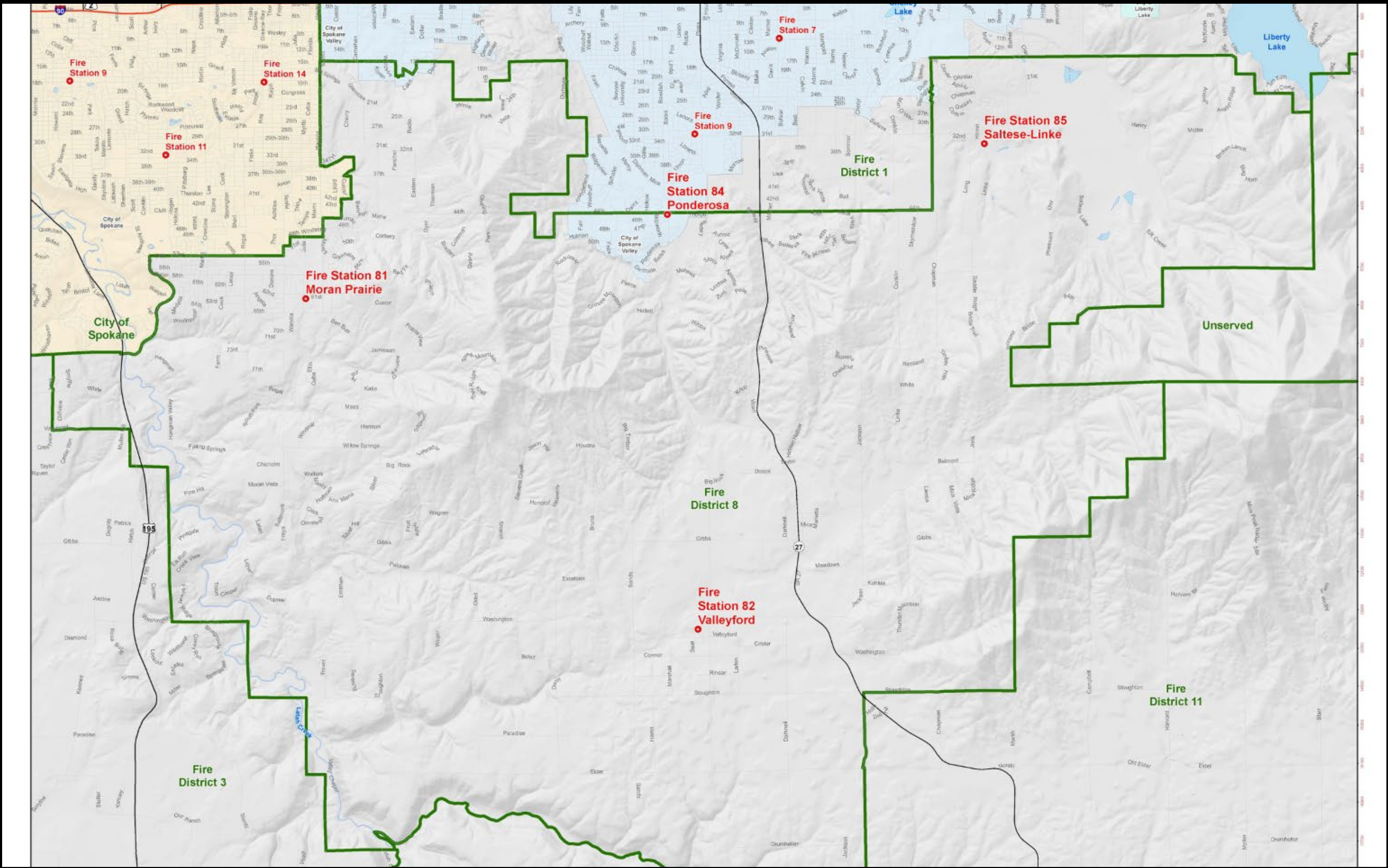
Ponderosa

South Valley

Morningside

Saltese

Respond from four (4) neighborhood  
fire stations.





Who We Serve

Moran Prairie

Latah Valley

Glenrose

Mica

Valleyford

Ponderosa

South Valley

Morningside

Saltese

Respond from four (4) neighborhood  
fire stations.



*Who We Serve*

- Moran Prairie
- Latah Valley
- Glenrose
- Mica
- Valleyford
- Ponderosa
- South Valley
- Morningside
- Saltese

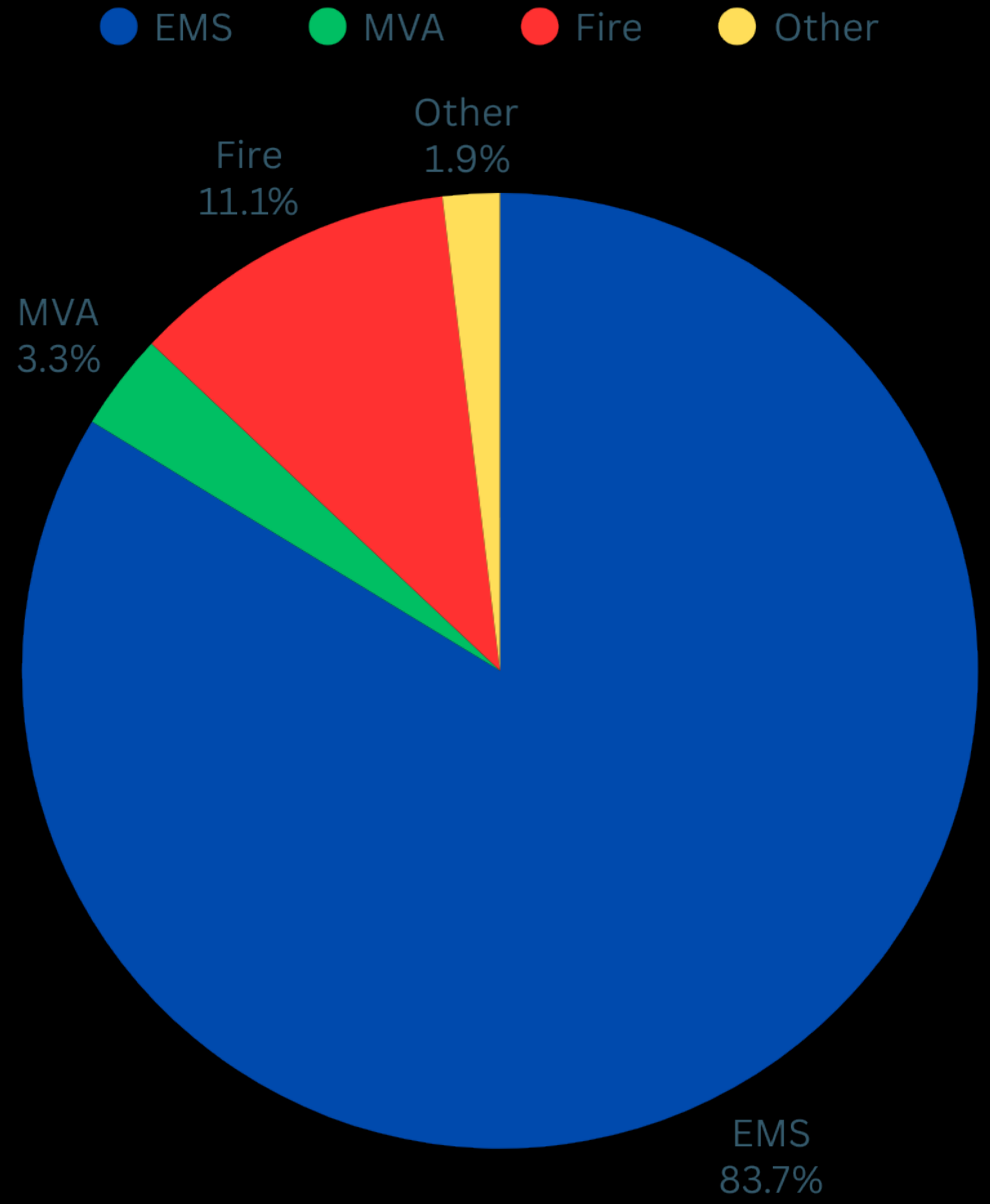
Calls for Service

4,209

83.7 % EMS

Increase of 15.5%

2020 -2023



Who We Serve

Moran Prairie

Latah Valley

Glenrose

Mica

Valleyford

Ponderosa

South Valley

Morningside

Saltese

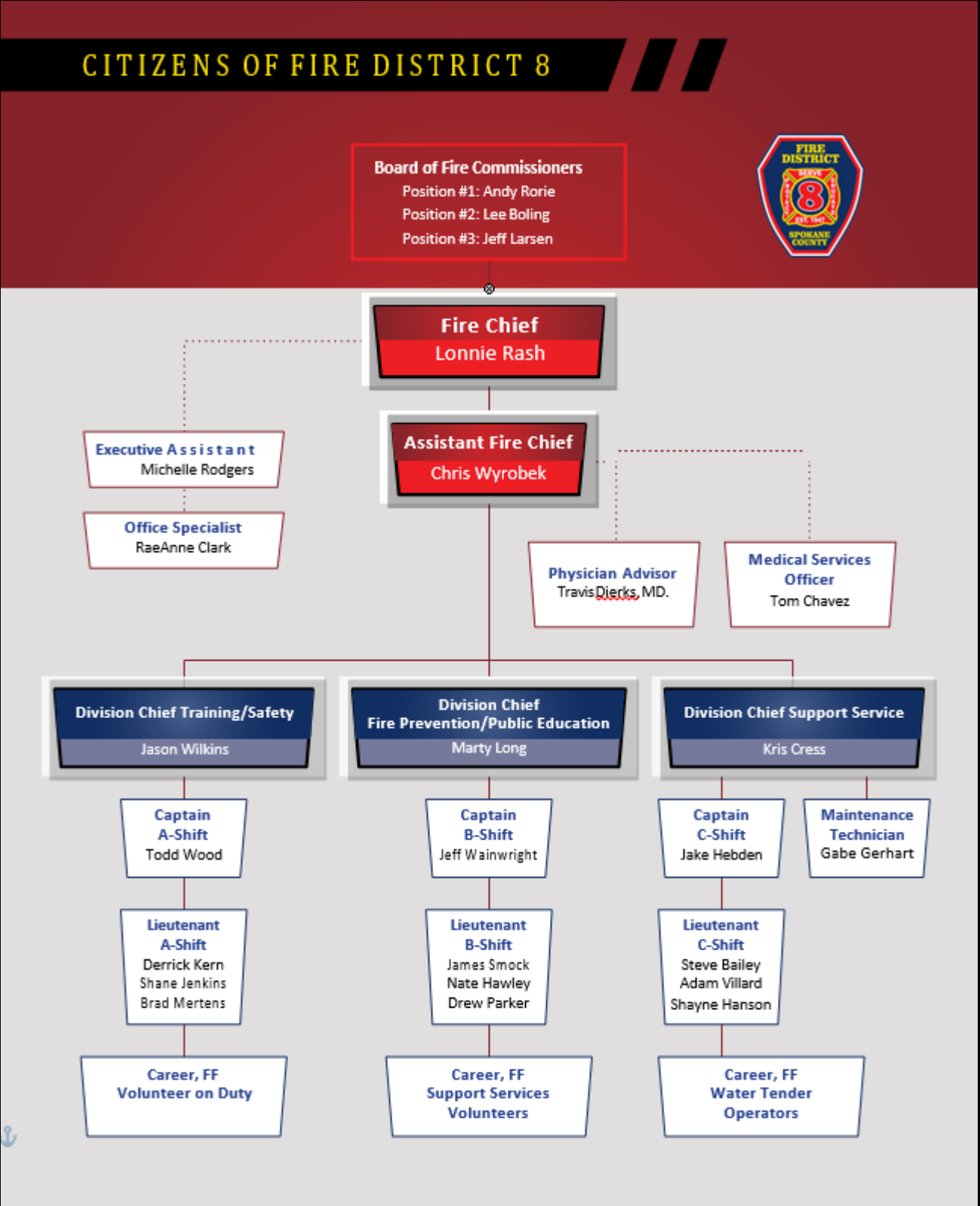
Staffing

50 Full-time Firefighter EMT’s or  
Firefighter Paramedics

2 Chief Officers

4 Support Staff  
Finance  
Human Resources  
Maintenance

12 Volunteer Members





























STAY SAFE  
STAY CALM  
STAY ALERT  
STAY IN CONTROL  
STAY TOGETHER  
STAY STRONG  
STAY POSITIVE  
STAY OPEN-MINDED  
STAY HUMBLE  
STAY GRATEFUL  
STAY KIND  
STAY PATIENT  
STAY COURAGEOUS  
STAY DETERMINED  
STAY FAITHFUL  
STAY HOPEFUL  
STAY OPTIMISTIC  
STAY POSITIVE  
STAY STRONG  
STAY TOGETHER  
STAY CALM  
STAY ALERT  
STAY IN CONTROL  
STAY TOGETHER  
STAY CALM  
STAY ALERT  
STAY IN CONTROL

**Smoke Alarms**  
Check your smoke alarm regularly.  
Change the batteries in your smoke alarm once a year.  
Test your smoke alarm once a month.  
If you hear a smoke alarm, get out of the house immediately.  
Close the door behind you as you leave.  
Call the fire department if you are unsure if the alarm is real.

**Fire Safety**  
If you see a fire, call 911.  
If you are in a room with a fire, close the door and stay low to the ground.  
If you are outside, get away from the fire as quickly as possible.  
If you are in a car, get out of the car as quickly as possible.

**Earthquake Safety**  
If you are indoors, drop, cover, and hold on.  
If you are outdoors, move away from buildings and power lines.  
If you are in a car, pull over to the side of the road and stay there.





FIRE DIST  
8  
SPOKANE CO











*Who We Serve*

Moran Prairie

Latah Valley

Glenrose

Mica

Valleyford

Ponderosa

South Valley

Morningside

Saltese

What is on your April 22, 2025 Ballot?

Elected Board of Fire Commissioners have adopted Proposition 1

Fire District 8 is asking our voters to consider *restoring* the current Emergency Medical Services levy to \$.50 per \$1,000 of assessed value from the current \$.29 per \$1,000 of assessed value.

This will be for collection in 2026.

*Who We Serve*

Moran Prairie

Latah Valley

Glenrose

Mica

Valleyford

Ponderosa

South Valley

Morningside

Saltese

Why are we asking for an increase to the current EMS Levy?

Over 83% of our calls are for Emergency Medical Services (EMS).

Maintain and in some response areas increase staffing to ensure a minimum of three Firefighter EMT's with a minimum of one of the three being a Firefighter Paramedic are on duty at each station .  
*We will do this by hiring up to two firefighter paramedics .*

*Replace and upgrade aging medical equipment ; cardiac monitors (36 K), AED's, CPR compression devices (20 K), vehicle extrication tools (Jaws of Life ) (30 k) and funding for expensive life saving medications .*



*Who We Serve*

Moran Prairie

Latah Valley

Glenrose

Mica

Valleyford

Ponderosa

South Valley

Morningside

Saltese

# Why are we asking for an increase to the current EMS Levy?

*Purchase an alternative “transport capable” response vehicle(s ) to respond to emergency medical calls in a smaller and more cost effective vehicle when staffing allows ; reducing mileage and wear on more expensive fire apparatus and when simultaneous EMS calls happen .* (Note)

During simultaneous EMS calls, ensure adequate in-district and automatic aid resources are available supporting timely emergency responses and protecting fire insurance ratings .

(Note)

*We rely on Automatic Aid with Spokane and Spokane Valley Fire. 65 % of the responses in 2021-2024 were in Fire District 8. Automatic aid ensures effective firefighting force and closes unit second response .*

*Who We Serve*

Moran Prairie

Latah Valley

Glenrose

Mica

Valleyford

Ponderosa

South Valley

Morningside

Saltese

Why are we asking for an increase to the  
current EMS Levy?

Maintain funding for equipment that does not require the district to ask for special equipment Bonds .

Helps us to be competitive in salary and benefits ; retaining employees and reducing the cost of new member training and overtime costs .

Forecast for the future needs and funding to provide sustainable service .

Who We Serve

Moran Prairie

Latah Valley

Glenrose

Mica

Valleyford

Ponderosa

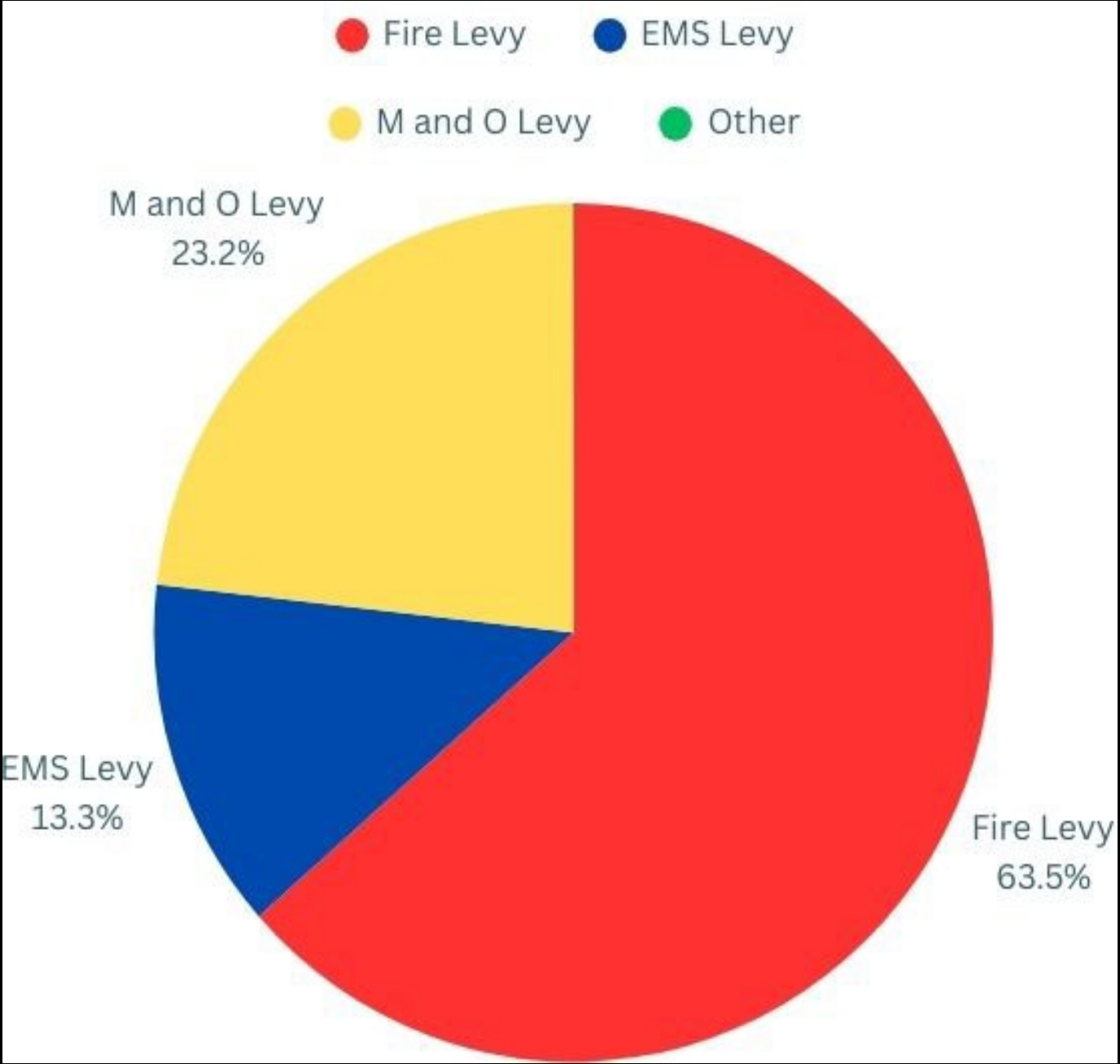
South Valley

Morningside

Saltese

# REVENUE 2025

Revenue Category	2025
<b>Taxes-Fire</b> \$1.50 per \$1,000 AV <i>Collected at \$1.294 for 2025</i>	\$7,964,563  (Inclusive of \$95,279 new construction)
<b>Taxes-EMS</b> \$0.50 per \$1,000 AV <i>Collected at \$0.291 for 2025</i>	\$1,641,270  (inclusive of \$19,948 new construction)
<b>Taxes – Special Levy (M &amp; O)</b> \$0.50 per \$1,000 AV <i>Collected at \$0.472 for 2025</i>	\$2,938,178
<b>Taxes - State Assessed Property</b>	\$5,000
<b>Total Projected Revenue</b>	<b><i>\$12,549,011</i></b>
Total of \$2.05/ \$1,000 AV	



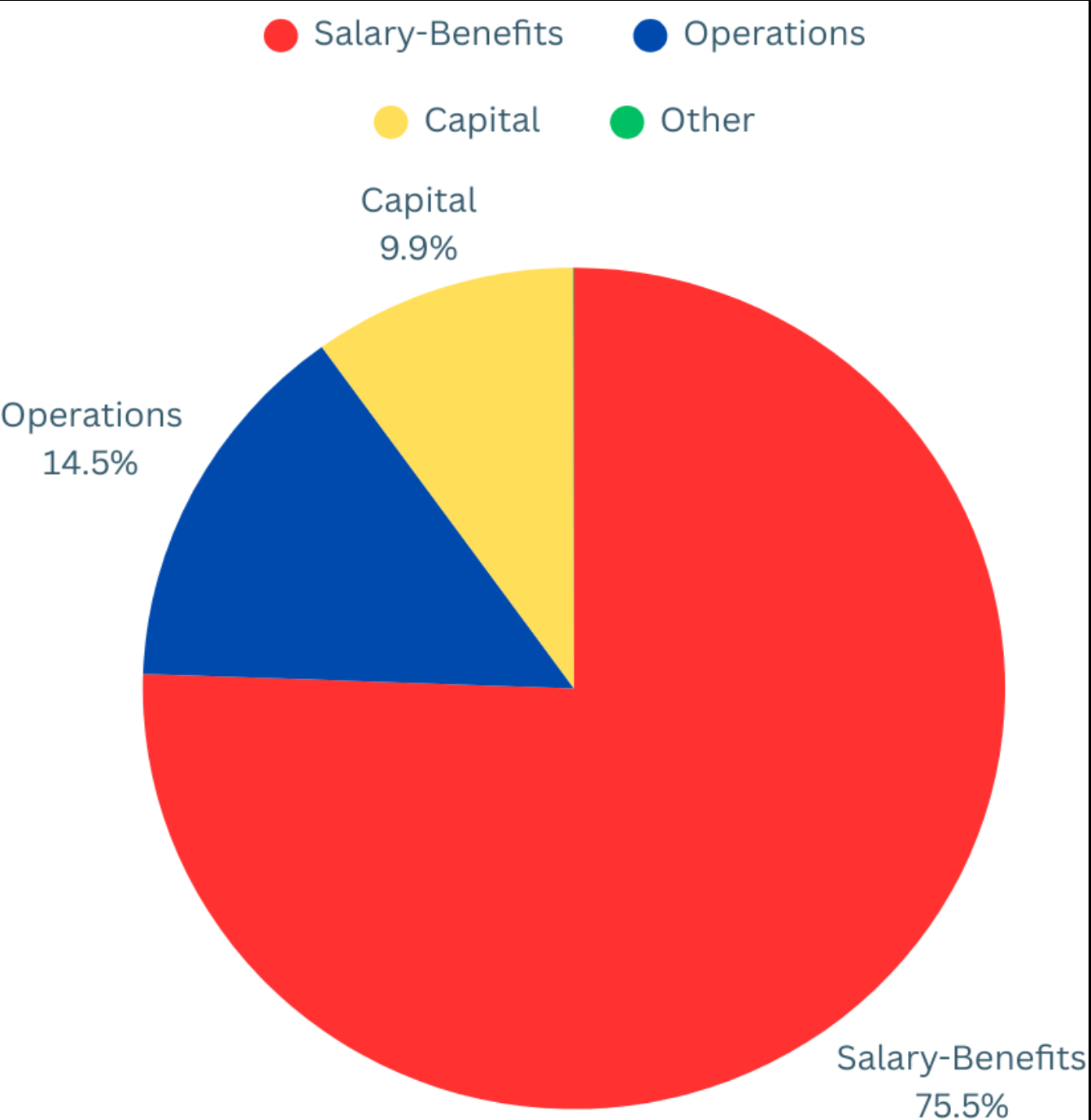


Who We Serve

- Moran Prairie
- Latah Valley
- Glenrose
- Mica
- Valleyford
- Ponderosa
- South Valley
- Morningside
- Saltese

# EXPENDITURES 2025

Expenditure Category	2025
Salary- Benefits	\$9,484,282
Operations Vehicle Repair Facility Repairs Heat-Fuel Etc.	\$1,821,729
Capital <i>No 2021 Bond for capital improvement.</i>	1,243,000
Unclassified	\$0
Total Projected Expenditures	<i>\$12,549,011</i>



*Who We Serve*

Moran Prairie

Latah Valley

Glenrose

Mica

Valleyford

Ponderosa

South Valley

Morningside

Saltese

How much revenue will this levy increase generate?

The EMS Levy increase will generate \$1,242,689 .00 in 2026 .

Who We Serve

What will this cost?

Moran Prairie

The \$.21 levy lid lift will cost an additional :

Latah Valley

\$500 ,000 Home = \$8.75 per month

Glenrose

Mica

\$750 ,000 Home = \$13.00 per month

Valleyford

\$1,000 ,000 Home= \$17.50 per month

Ponderosa

South Valley

Visit Spokane County Assessor website, click on Tax  
Transperancy to determine your specific cost.

Morningside

Saltese

[www.spokanecounty.org/5491/Assessor](http://www.spokanecounty.org/5491/Assessor)



Who We Serve

How long will it last?

Moran Prairie

In 2026 , the levy rate would return to \$.50 per \$ 1,000 of assessed value .

Latah Valley

Glenrose

1% more per year or the amount permitted by the *Consumer Price Index (CPI)*, whichever is greater, for the next five year-capped at \$.50 per \$1,000 . After six years, the levy rate will begin to decrease .

Mica

Valleyford

Ponderosa

South Valley

Allows the Fire District maintain funding and not have to ask for additional EMS Levy increases in the near future .

Morningside

Saltese

*Who We Serve*

Moran Prairie

Latah Valley

Glenrose

Mica

Valleyford

Ponderosa

South Valley

Morningside

Saltese

Does the Fire District receive more taxes because of the increased assessed value?

RCW 84.55 limits Fire District 8 to a 1% annual increase in total revenue from the EMS Levy, regardless of changes in property assessments. This means that even if a home's assessed value rises significantly, the district's total tax revenue can increase by only 1% from the Fire and EMS Levy.

For 2025, the total assessed property value in Fire District 8 increased by 0.60 % from 2024.

*Who We Serve*

Moran Prairie

Latah Valley

Glenrose

Mica

Valleyford

Ponderosa

South Valley

Morningside

Saltese

What is on your April 22, 2025 Ballot?

Elected Board of Fire Commissioners have adopted Proposition 1

Fire District 8 is asking our voters to consider *restoring* the current Emergency Medical Services levy to \$.50 per \$1,000 of assessed value from the current \$.29 per \$1,000 of assessed value.

This will be for collection in 2026.





FIRE DISTRICT  
8  
SPOKANE COUNTY



Who We Serve

Moran Prairie

Latah Valley

Glenrose

Mica

Valleyford

Ponderosa

South Valley

Morningside

Saltese

Questions

Contact Lonnie Rash, Fire Chief

Cellphone: 509.370.9801

or

Email: [Lrash@scfd8.org](mailto:Lrash@scfd8.org)